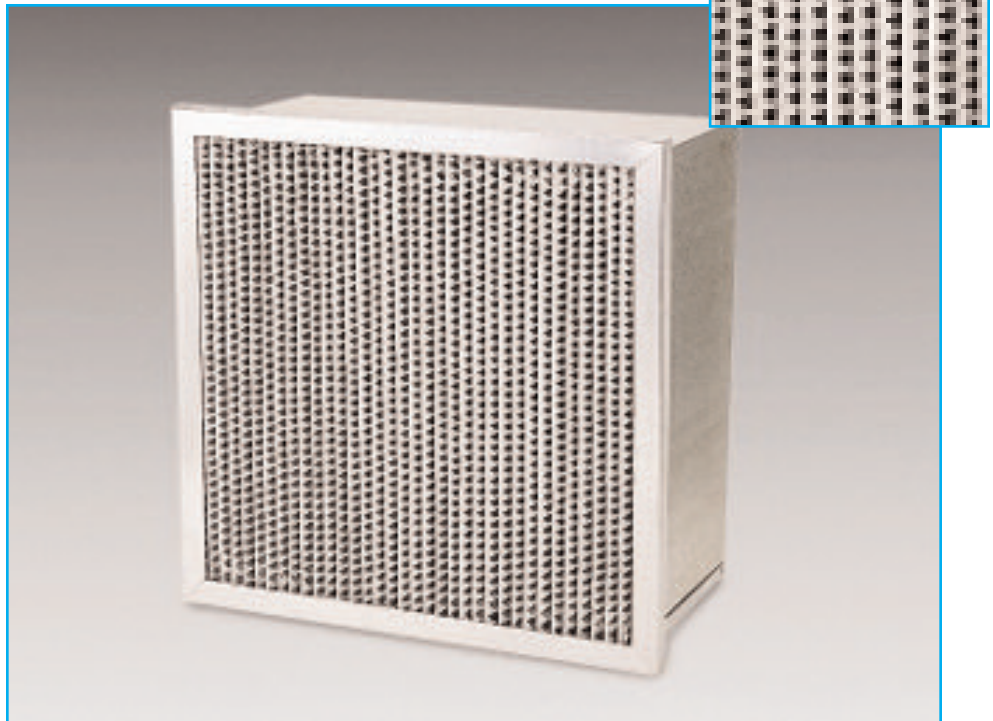


FILTRATION GROUP

ASHRAE CELL



- Moisture resistant media for high humidity applications
- Designed for use in Variable Air Volume systems
- Replaces traditional pocket-style filters
- Rigid format prevents unloading of dust due to media oscillation
- Galvanized steel frame provides exceptional strength
- UL900 Class 1



DESCRIPTION

The ASHRAE Cell is an extended surface, high efficiency filter constructed in a rigid frame. The filter utilizes a continuous sheet of wet-laid microfiber media that is deep pleated. This media can operate in applications that have 100% humidity.

Hemmed edge aluminum corrugated separators are placed between each pleat to stabilize the pack and ensure proper air flow through the filter. The media pack is sealed to all four sides of the frame. The result is a high integrity filter that delivers high efficiency and consistent performance. The ASHRAE Cell is available in a MERV 9, MERV 11, MERV 13 and MERV 14 per ASHRAE standard 52.2-2007 in both 6" and 12" depths. Single or double header versions are also available.

BENEFITS

The ASHRAE Cell can be used in diverse conditions including 100% humidity and

turbulent or variable air volume (VAV) systems. With such durability, this filter usually requires fewer changeouts than pocket or rigid cell filters.

The ASHRAE Cell is an upgrade from lofted high efficiency fiberglass media filters and provides more media per filter than the traditional pocket style or rigid cell filter. The construction and media of this filter eliminates fiber shedding and dust particle unloading.

APPLICATIONS

The ASHRAE Cell can be used in place of pocket filters when conditions call for a rigid filter or where high humidity warrants its use. These filters can be used in a variety of commercial and industrial applications including hospitals, high-tech manufacturing and food processing. This filter can also be used in place of other rigid cell filters when high dust holding capacity is desired.



DIMENSIONS AND PERFORMANCE DATA

90-95% EFFICIENCY (MERV 14*)											
SINGLE HEADER PART NO.**	DOUBLE HEADER PART NO.**	NOMINAL FILTER SIZE	RATED AIRFLOW CAPACITY (cfm)				INITIAL RESISTANCE				MEDIA AREA (sq. ft.)
			250 fpm	375 fpm	500 fpm	625 fpm	250 fpm	375 fpm	500 fpm	625 fpm	
16296	16304	24 x 12 x 6	500	750	N/R	N/R	0.45	0.65	N/A	N/A	27
16297	16305	20 x 20 x 6	700	1050	N/R	N/R	0.45	0.65	N/A	N/A	41
16295	16303	24 x 20 x 6	850	1275	N/R	N/R	0.45	0.65	N/A	N/A	50
16294	16302	24 x 24 x 6	1000	1500	N/R	N/R	0.45	0.65	N/A	N/A	60
16292	16300	24 X 12 X 12	500	750	1000	1250	0.25	0.40	0.65	0.78	56
16293	16301	20 X 20 X 12	700	1050	1400	1750	0.25	0.40	0.65	0.78	84
16291	16299	24 X 20 X 12	850	1275	1700	2125	0.25	0.40	0.65	0.78	102
16290	16298	24 X 24 X 12	1000	1500	2000	2500	0.25	0.40	0.65	0.78	125
80-85% EFFICIENCY (MERV 13*)											
SINGLE HEADER PART NO.**	DOUBLE HEADER PART NO.**	NOMINAL FILTER SIZE	RATED AIRFLOW CAPACITY (cfm)				INITIAL RESISTANCE				MEDIA AREA (sq. ft.)
			250 fpm	375 fpm	500 fpm	625 fpm	250 fpm	375 fpm	500 fpm	625 fpm	
16280	16288	24 x 12 x 6	500	750	N/R	N/R	0.35	0.55	N/A	N/A	23
16281	16289	20 x 20 x 6	700	1050	N/R	N/R	0.35	0.55	N/A	N/A	35
16279	16287	24 x 20 x 6	850	1275	N/R	N/R	0.35	0.55	N/A	N/A	43
16278	16286	24 x 24 x 6	1000	1500	N/R	N/R	0.35	0.55	N/A	N/A	52
16276	16284	24 X 12 X 12	500	750	1000	1250	0.20	0.35	0.50	0.60	47
16277	16285	20 X 20 X 12	700	1050	1400	1750	0.20	0.35	0.50	0.60	72
16275	16283	24 X 20 X 12	850	1275	1700	2125	0.20	0.35	0.50	0.60	88
16274	16282	24 X 24 X 12	1000	1500	2000	2500	0.20	0.35	0.50	0.60	106
60-65% EFFICIENCY (MERV 12*)											
SINGLE HEADER PART NO.**	DOUBLE HEADER PART NO.**	NOMINAL FILTER SIZE	RATED AIRFLOW CAPACITY (cfm)				INITIAL RESISTANCE				MEDIA AREA (sq. ft.)
			250 fpm	375 fpm	500 fpm	625 fpm	250 fpm	375 fpm	500 fpm	625 fpm	
16264	16272	24 x 12 x 6	500	750	N/R	N/R	0.25	0.45	N/A	N/A	23
16265	16273	20 x 20 x 6	700	1050	N/R	N/R	0.25	0.45	N/A	N/A	35
16263	16271	24 x 20 x 6	850	1275	N/R	N/R	0.25	0.45	N/A	N/A	43
16262	16270	24 x 24 x 6	1000	1500	N/R	N/R	0.25	0.45	N/A	N/A	52
16260	16268	24 X 12 X 12	500	750	1000	1250	0.15	0.25	0.45	0.60	47
16261	16269	20 X 20 X 12	700	1050	1400	1750	0.15	0.25	0.45	0.60	72
16259	16267	24 X 20 X 12	850	1275	1700	2125	0.15	0.25	0.45	0.60	88
16258	16266	24 X 24 X 12	1000	1500	2000	2500	0.15	0.25	0.45	0.60	106

N/R = Not Recommended

N/A = Not Applicable

* Reference ASHRAE 52.2-2007

** Consult factory for additional sizes and performance data.

SPECIFICATIONS

Filter Media:

Filter Frame:

Actual Frame Size:

Wet-laid microfiber paper

24-26 ga galvanized steel

Height and width are 5/8" less than the nominal size.

Depth for 12" filter is 11 1/2" and for the 6" filter is 5 7/8".

Flammability:

Recommended Final Resistance:

Maximum Temperature:

UL900 Class 1

1.5" w.g.

200° F

DISTRIBUTED BY

© FGI 04/07


FILTRATION GROUP®

Phone: 877-FGI-TEAM (344-8326)

Fax: 800-518-1162

www.filtrationgroup.com

e-mail: aerostar@filtrationgroup.com

